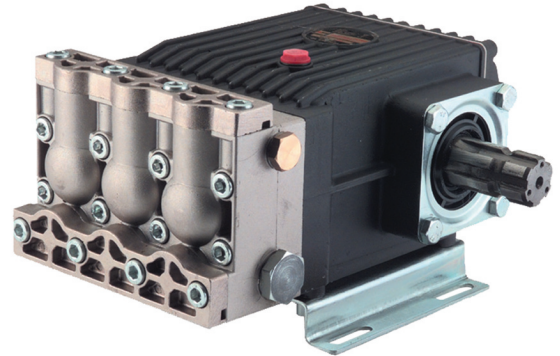


AT Series 69

Triplex Plunger Pump, Splined Shaft

FEATURES

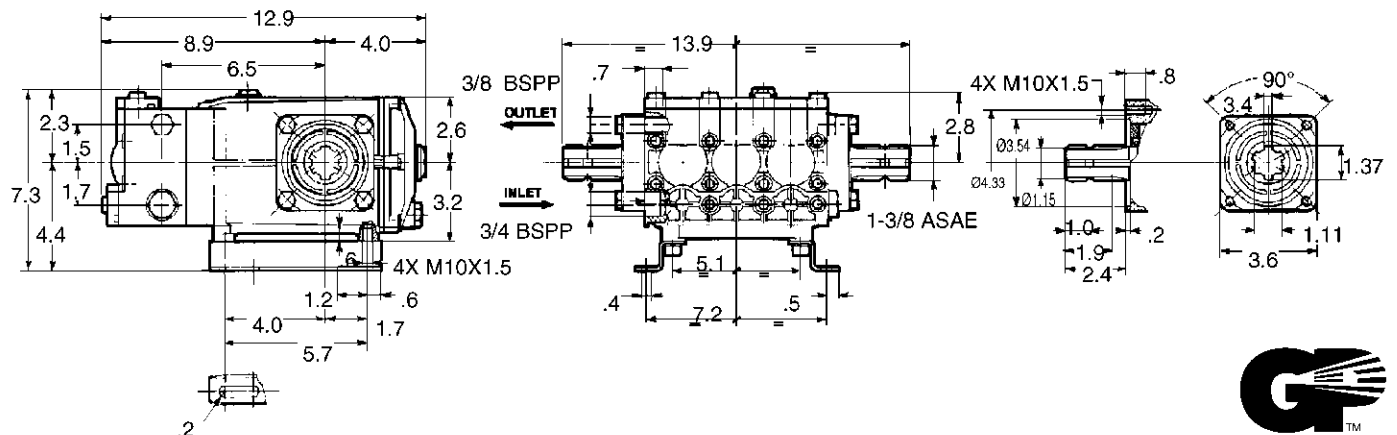
- The industry's choice for high-flow applications
- Aluminum Manifold
- Large-capacity, die-cast, anodized aluminum oil-bath crankcase
- Over-sized connecting rods for maximum life
- Heavy-duty tapered roller bearing.
- Solid ceramic plungers with continuously lubricated packings
- Unitized stainless steel inlet and discharge valves

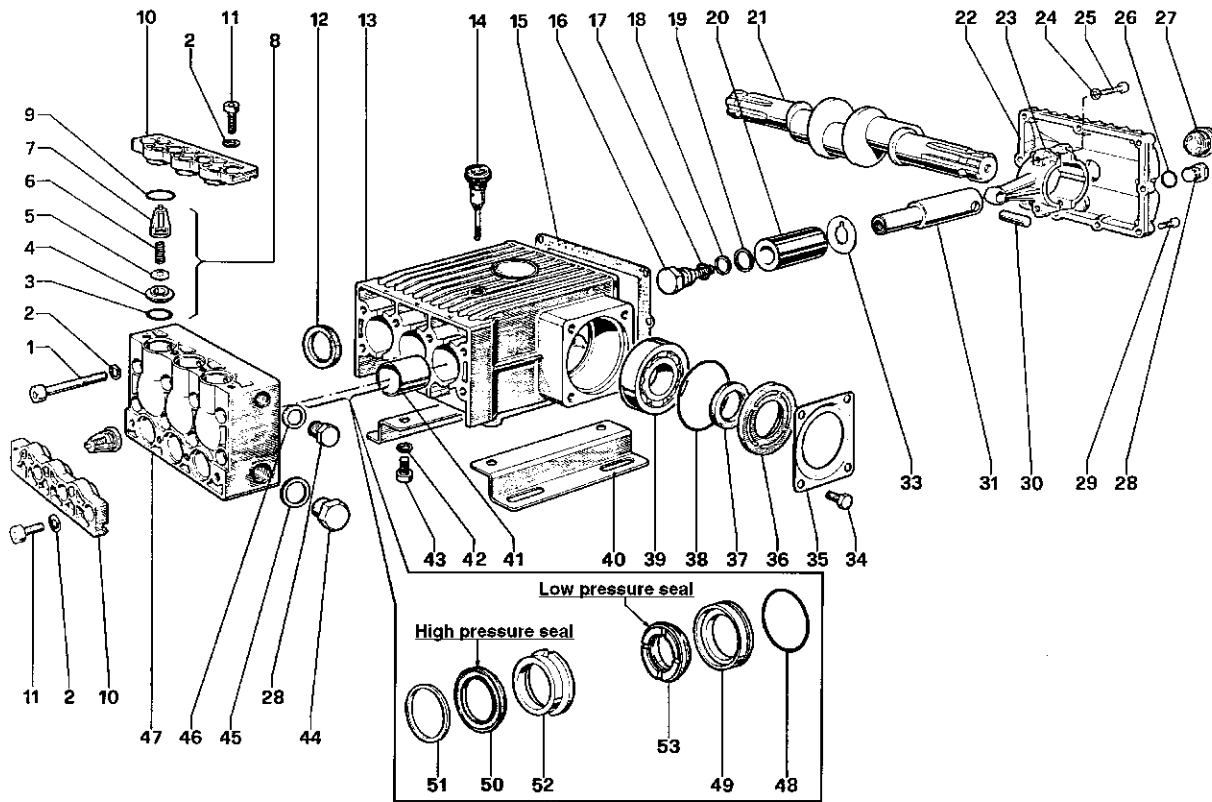


SPECIFICATIONS

| Pump Model | AT0055 |
|----------------------------|---------------------|
| Maximum Volume | 13.22 GPM |
| Maximum Discharge Pressure | 725 PSI |
| Maximum Pump Speed | 650 RPM |
| Maximum Inlet Pressure | 125 PSI |
| Bore | 1.417 in. / 36 mm |
| Stroke (in./mm) | .945 / 24 |
| Crankcase Oil Capacity | 51 oz. |
| Maximum Fluid Temperature | 165°F |
| Inlet Port Thread | 3/4-14 BSPP-F |
| Discharge Port Thread | 3/8-19 BSPP-F |
| Shaft Diameter | 1-3/8" ASAE splined |
| Weight | 36 lbs. |
| Dimensions | 13 x 14 x 7.5 in. |

DIMENSIONAL DRAWING





PARTS LIST

| ITEM | PART NO. | DESCRIPTION | KIT | QTY. | ITEM | PART NO. | DESCRIPTION | KIT | QTY. | ITEM | PART NO. | DESCRIPTION | KIT | QTY. |
|------|------------|----------------|-----|------|------|------------|-------------------------------|-----|------|------|------------|------------------------|-------|------|
| 1. | 99.3787.00 | Screw | 8 | | 19. | 96.7555.00 | Washer | 74 | 3 | 36. | 69.2115.51 | Shim | | 2 |
| 2. | 96.7104.00 | Washer | 16 | | 20. | 69.0400.09 | Plunger (36 mm) | | 3 | | 69.2116.51 | Shim Special | | 1 |
| 3. | 90.3859.00 | O-Ring | 62 | 6 | 21. | 69.0200.35 | Crankshaft 1-3/8" ASAE dual | | 1 | 37. | 90.1672.00 | Oil Seal | 32 | 2 |
| 4. | 36.2017.66 | Valve Seat | 62 | 6 | | 69.0203.35 | Crankshaft 1-3/8" ASAE Single | | | 38. | 90.4131.00 | O-Ring | | 2 |
| 5. | 36.2018.76 | Valve | 62 | 6 | | 69.0207.35 | 1-3/8" ASAE x 35mm solid | | | 39. | 91.8480.00 | Bearing | | 2 |
| 6. | 94.7394.00 | Spring | 62 | 6 | 22. | 69.1600.22 | Crankcase Cover | | 1 | 40. | 47.2000.74 | Foot | | 2 |
| 7. | 36.2008.51 | Valve Guide | 62 | 6 | 23. | 69.0300.01 | Connecting Rod | | 3 | 41. | 90.9162.00 | Bushing | | 3 |
| 8. | 36.7060.01 | Valve Unit | 62 | 6 | 24. | 96.7014.00 | Washer | | 6 | 42. | 96.7106.00 | Washer | | 4 |
| 9. | 90.4055.00 | O-Ring | | 6 | 25. | 99.3099.00 | Screw | | 6 | 43. | 99.3644.00 | Screw | | 4 |
| 10. | 69.2180.22 | Valve Cover | | 2 | 26. | 90.3833.00 | O-Ring | | 1 | 44. | 98.2265.00 | Cap Screw | | 1 |
| 11. | 99.3669.00 | Screw | | 8 | 27. | 97.5968.00 | Oil Sight Gauge | | | 45. | 96.7700.00 | Washer | | 1 |
| 12. | 90.1656.00 | Oil Seal | 37 | 3 | 28. | 98.2100.00 | Cap Screw | | 2 | 46. | 96.7380.00 | Washer | | 1 |
| 13. | 69.0100.22 | Crankcase | | 1 | 29. | 99.1867.00 | Screw | | 9 | 47. | 69.1200.22 | Manifold | | 1 |
| 14. | 98.2106.00 | Oil Dipstick | | 1 | 30. | 97.7398.00 | Pin | | 3 | 48. | 90.3885.00 | O-Ring | 39,40 | 3 |
| 15. | 69.2119.84 | Gasket | | 1 | 31. | 69.0500.22 | Plunger Guide | | 3 | 49. | 69.0802.70 | Packing Retainer | 39,40 | 3 |
| 16. | 69.2195.66 | Plunger Screw | 74 | 3 | 33. | 96.7565.00 | Washer | | 3 | 50. | 90.2820.00 | Packing | 38,39 | 3 |
| 17. | 90.3841.00 | O-Ring | 74 | 3 | 34. | 99.3636.00 | Screw | | 8 | 51. | 69.1002.93 | Head Ring | 39,41 | 3 |
| 18. | 90.5107.00 | Anti-Ext. Ring | 74 | 3 | 35. | 68.1500.74 | Cover | | 2 | 52. | 69.2168.70 | Intermed. Ring | 39,42 | 3 |
| | | | | | | | | | | 53. | 90.2823.00 | Seal, Low Press., 36mm | 38,39 | 3 |

REPAIR KITS

| KIT NO. | 32 | 37 | 38 | 39 | 40 | 41 | 42 | 62 | 74 |
|--------------------------------------|----|----|--------|------------------------|--------|----|----|-------------------|----------------|
| ITEM NO.s INCLUDED IN KIT | 37 | 12 | 50, 53 | 48, 49, 50, 51, 52, 53 | 48, 49 | 51 | 52 | 3, 4, 5, 6, 7 (8) | 16, 17, 18, 19 |
| NUMBER OF ASSEMBLIES IN KIT | 2 | 3 | 3 | 1/2 | 3 | 6 | 3 | 6 | 3 |
| NUMBER OF CYLINDERS KIT WILL SERVICE | - | 3 | 3 | 1 | 3 | 3 | 3 | 3 | 3 |

TORQUE SPECS*

| Position | Ft.-lbs. |
|----------|----------|
| 1 | 29.4 |
| 11 | 44.2 |
| 16 | 29.4 |
| 25 | 14.7 |
| 27 | 13.2 |
| 28 | 29.4 |
| 29 | 7.3 |
| 34 | 29.4 |
| 43 | 29.4 |
| 44 | 51.5 |

*Decrease torque by 20% if threads are lubricated.