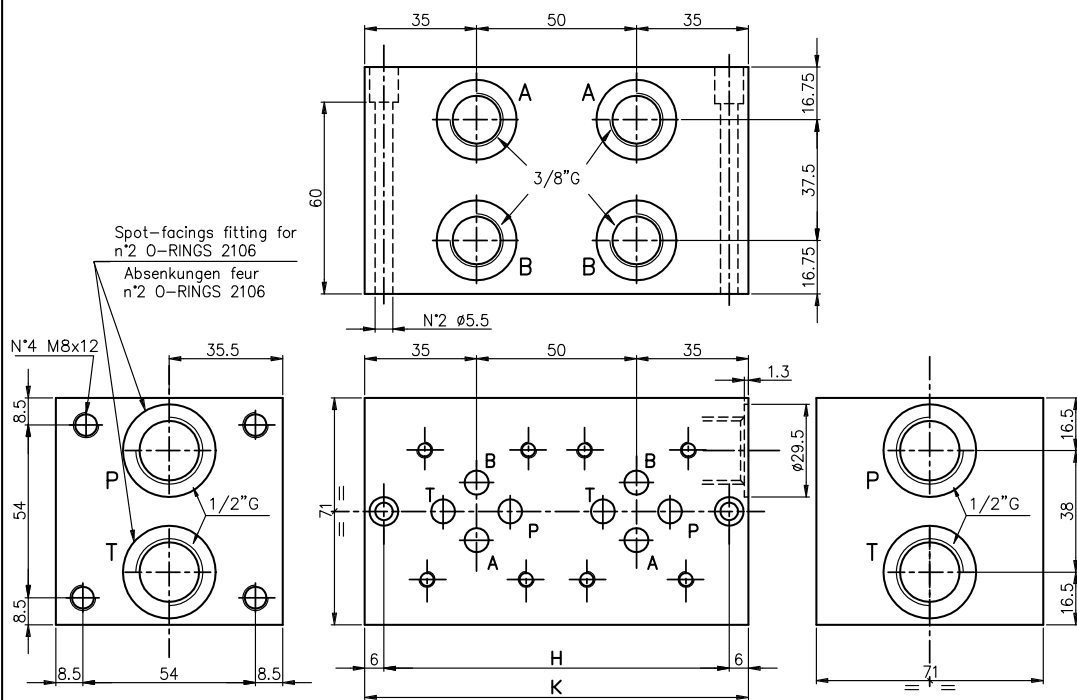
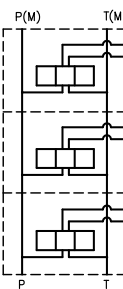


MONOBLOCK TYPE EM..213/..Y (prearrangement for modular system)
 MONOBLOCK TYP EM..213/..Y (Vorbereitung für Verkettungsausführung)

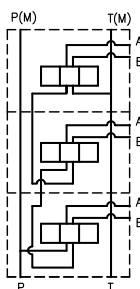
Monoblock with ports A-B = 3/8" G on the side, and P-T = 1/2" G.
 Monoblock mit seitlichen Anschlüssen A-B = 3/8" G, und P-T = 1/2" G.



Symbol
 parallel conn.
 Parallel schalt.



Symbol
 Series conn.
 Serien schalt.



N° Elem.	H	K	(Kg)
1	58	70	2
2 *	108	120	3.5
3 *	158	170	5
4 *	208	220	6.5
5	258	270	8
6	308	320	9.5
7	358	370	11
8	408	420	12.5
9	458	470	14
10	508	520	15.5
11	558	570	17
12	608	620	18.5

Ordering code
 Bestell-Code

EM * 21 3 / * Y

Monoblock = M

(if not indicated) = parallel
 (wenn nicht angegeben)
 fuer Serie / fuer Serie = S

modular system = 21
 Verkettungsausführung

CETOP 3

Y = without RV
 ohne DBV

1, 2, ..., 12 N. of elements (*)
 Anzahl Elemente (*)

NOTE (*) : The series version is standard from 2 up to 4 elements
 BEMERKUNG (*) : Serienversion ab 2 bis 4 fach standard